

# Marine Life Graphghan

## PART 7: SEAHORSES *Right-Handed Version*

Pattern & Graphs © Alex Mikkelborg  
Yarn provided by Stylecraft Yarns

**Stitch:** Corner-to-Corner (C2C)  
**Hook:** G/4.00mm

**Yarn:** Stylecraft Special DK in Duck Egg  
(background), Blush, Soft Peach and Black

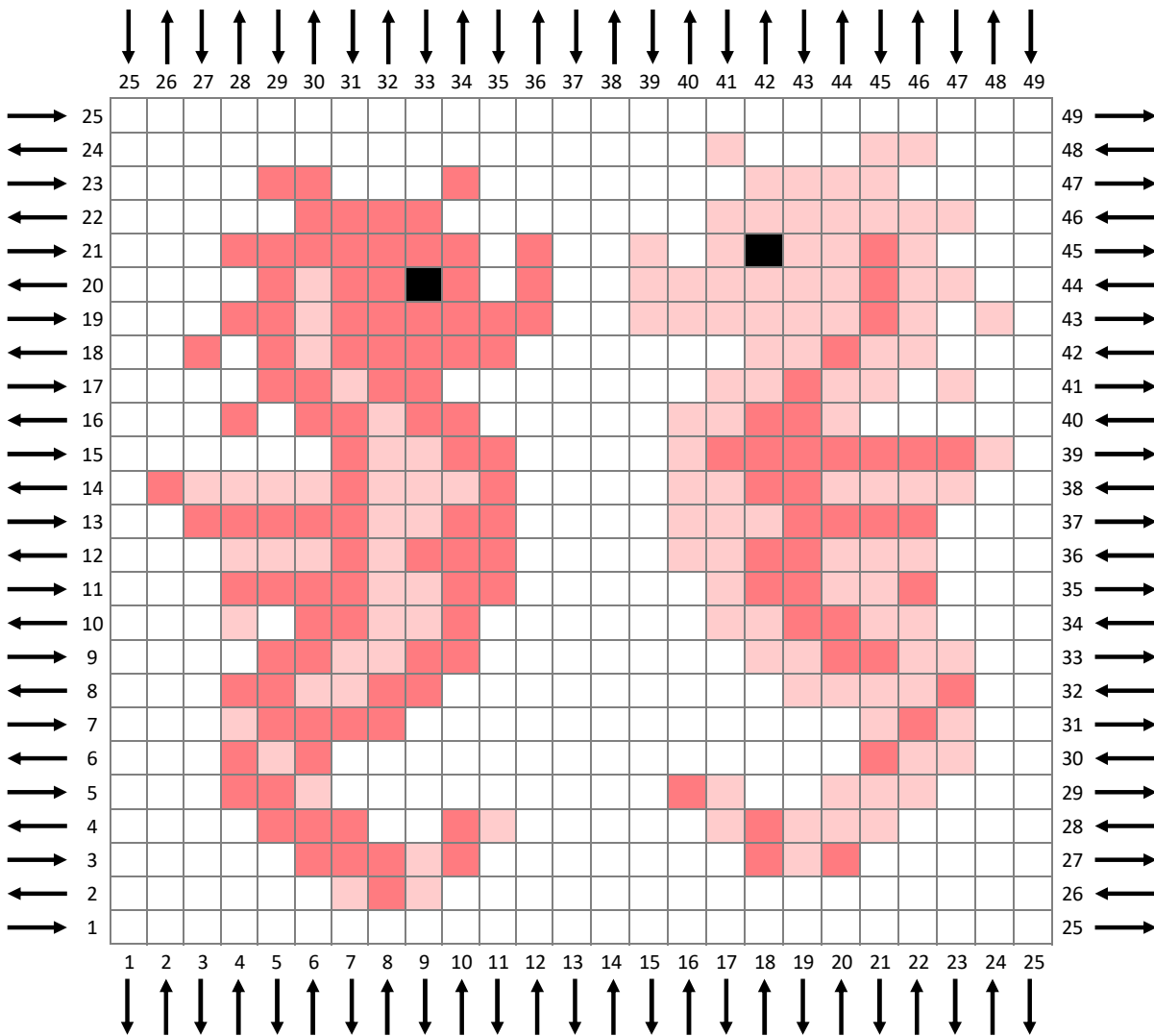
Find more at  
[www.twoheartscrochet.com/marine-life-cal](http://www.twoheartscrochet.com/marine-life-cal)

### Right-Handed Crocheters:

Begin in the **bottom-right** corner.

Odd rows: ← ↓

Even rows: → ↑



# Marine Life Graphghan

## PART 7: SEAHORSES *Left-Handed Version*

Pattern & Graphs © Alex Mikkelborg  
Yarn provided by Stylecraft Yarns

**Stitch:** Corner-to-Corner (C2C)  
**Hook:** G/4.00mm  
**Yarn:** Stylecraft Special DK in Duck Egg (background), Blush, Soft Peach and Black

Find more at  
[www.twoheartscrochet.com/marine-life-cal](http://www.twoheartscrochet.com/marine-life-cal)

### Left-Handed Crocheters:

Begin in the **bottom-left** corner.

Odd rows: → ↓  
Even rows: ← ↑