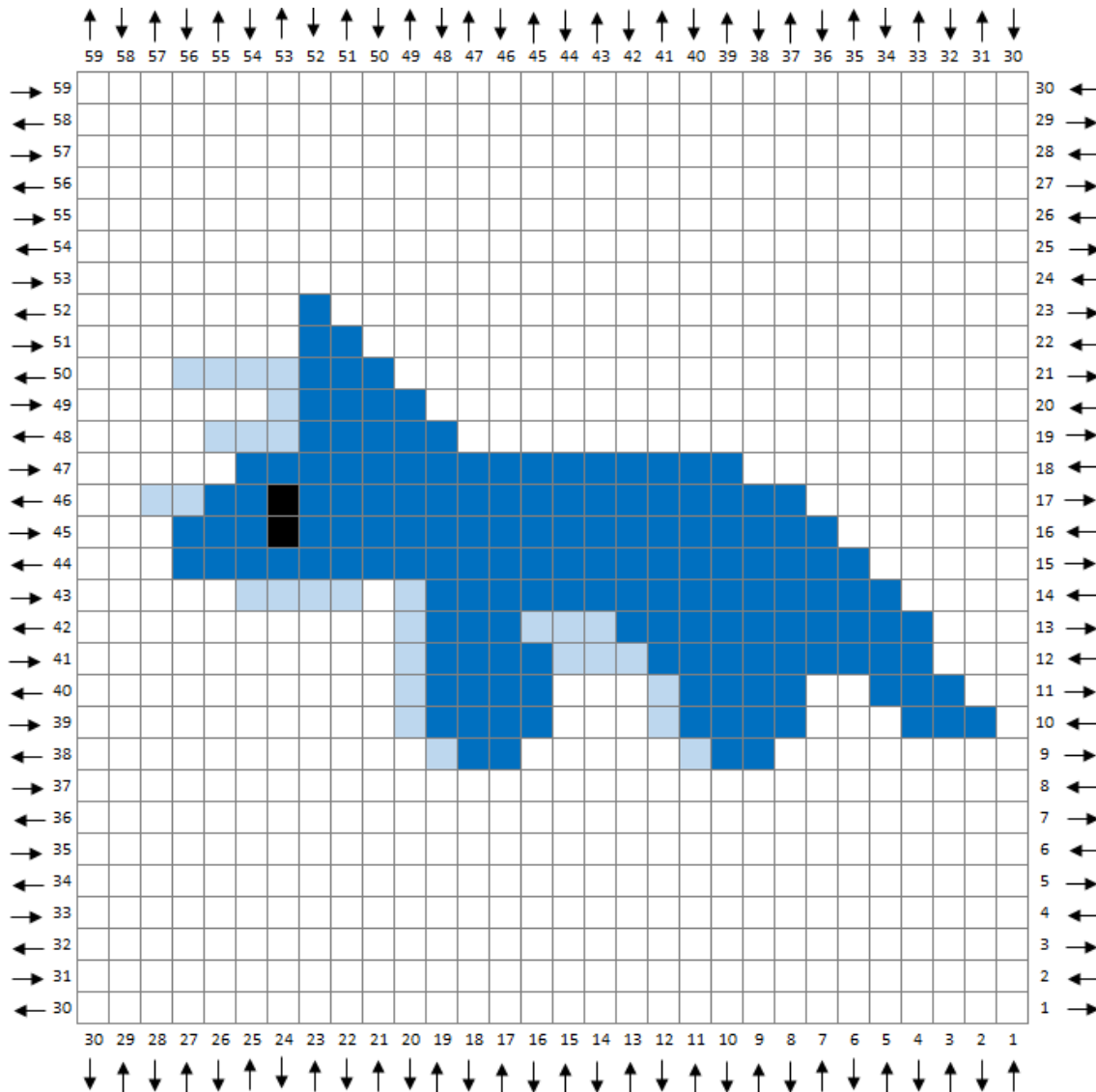


DINO CAL: TRICERATOPS



THE DINO CAL TRICERATOPS

*Designed by Alex Mikkelsen
Crafter and Creator of Two Hearts Crochet*

Hook Size: H/5.00mm

Vanna's Choice Yarns in the Following Colors:

Black, Colonial Blue, Silver Blue,
and a background color of your choice

- Black
- Colonial Blue
- Silver Blue

DINO CAL: TRICERATOPS

Yarn Colors:

BL=Black

CB=Colonial Blue

SB=Silver Blue

B=Background Color

INCREASING ROWS 1-30

Row 1: 1B (1 block)

Row 2: 2B (2 blocks)

Row 3: 3B (3 blocks)

Row 4: 4B (4 blocks)

Row 5: 5B (5 blocks)

Row 6: 6B (6 blocks)

Row 7: 7B (7 blocks)

Row 8: 8B (8 blocks)

Row 9: 9B (9 blocks)

Row 10: 10B (10 blocks)

Row 11: 9B, 1CB, 1B (11 blocks)

Row 12: 2B, 1CB, 9B (12 blocks)

Row 13: 9B, 2CB, 2B (13 blocks)

Row 14: 3B, 1CB, 10B (14 blocks)

Row 15: 10B, 2CB, 3B (15 blocks)

Row 16: 3B, 2CB, 11B (16 blocks)

Row 17: 8B, 2CB, 1B, 2CB, 4B (17 blocks)

Row 18: 4B, 6CB, 8B (18 blocks)

Row 19: 8B, 1SB, 5CB, 5B (19 blocks)

Row 20: 5B, 6CB, 9B (20 blocks)

Row 21: 9B, 1SB, 5CB, 6B (21 blocks)

Row 22: 6B, 5CB, 1SB, 10B (22 blocks)

Row 23: 11B, 5CB, 7B (23 blocks)

Row 24: 7B, 5CB, 1SB, 11B (24 blocks)

Row 25: 8B, 2CB, 1B, 1SB, 5CB, 8B (25 blocks)

Row 26: 9B, 4CB, 2SB, 3CB, 8B (26 blocks)

Row 27: 8B, 1SB, 3CB, 1SB, 5CB, 9B (27 blocks)

Row 28: 10B, 5CB, 1SB, 3CB, 9B (28 blocks)

Row 29: 9B, 1SB, 8CB, 11B (29 blocks)

Row 30: 12B, 7CB, 1SB, 10B (30 blocks)

DECREASING ROWS 31-59

Row 31: 10B, 1SB, 6CB, 12B (29 blocks)

Row 32: 12B, 5CB, 1SB, 10B (28 blocks)

Row 33: 10B, 1SB, 4CB, 12B (27 blocks)

Row 34: 12B, 4CB, 10B (26 blocks)

Row 35: 8B, 1SB, 4CB, 12B (25 blocks)

Row 36: 12B, 4CB, 1SB, 7B (24 blocks)

Row 37: 6B, 1SB, 5CB, 11B (23 blocks)

Row 38: 11B, 5CB, 1SB, 5B (22 blocks)

Row 39: 5B, 1CB, 1BL, 4CB, 10B (21 blocks)

Row 40: 10B, 3CB, 1BL, 2CB, 4B (20 blocks)

Row 41: 3B, 7CB, 9B (19 blocks)

Row 42: 9B, 2CB, 1SB, 3CB, 3B (18 blocks)

Row 43: 3B, 1SB, 1B, 2SB, 2CB, 8B (17 blocks)

Row 44: 8B, 1CB, 1SB, 1B, 1SB, 1B, 1SB, 2B (16 blocks)

Row 45: 5B, 1SB, 1B, 1CB, 7B (15 blocks)

Row 46: 9B, 1SB, 4B (14 blocks)

Row 47: 3B, 1SB, 9B (13 blocks)

Row 48: 12B (12 blocks)

Row 49: 11B (11 blocks)

Row 50: 10B (10 blocks)

Row 51: 9B (9 blocks)

Row 52: 8B (8 blocks)

Row 53: 7B (7 blocks)

Row 54: 6B (6 blocks)

Row 55: 5B (5 blocks)

Row 56: 4B (4 blocks)

Row 57: 3B (3 blocks)

Row 58: 2B (2 blocks)

Row 59: 1B (1 block)