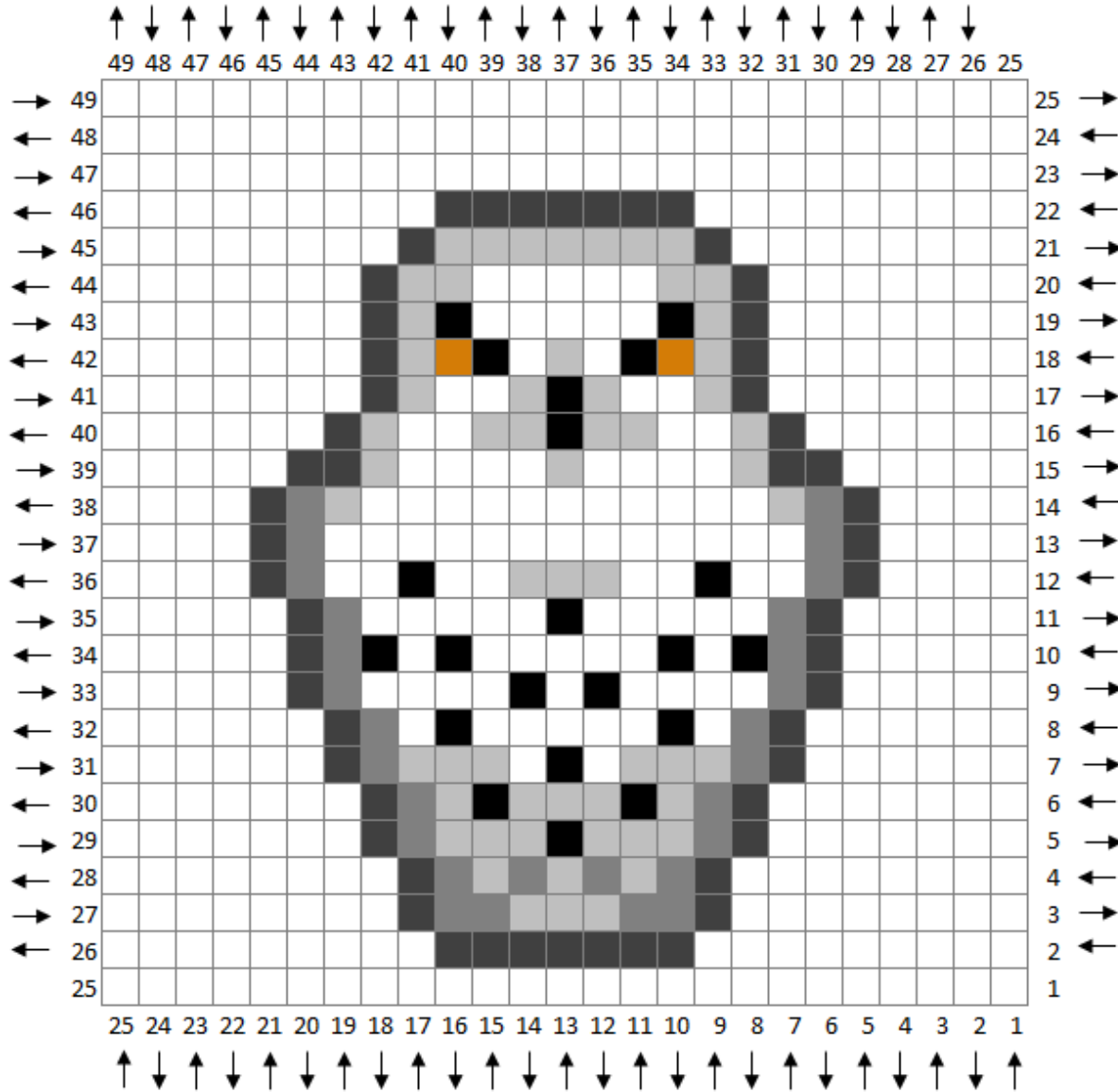








Harry Potter CAL - Square #12: Hedwig



Harry Potter CAL
Square #12:
Hedwig

Recommended Materials:
 Size I/5.5mm crochet hook

Suggested Yarn is Vanna's Choice in:
 Black, Charcoal Grey, Honey, Silver Grey,
 Silver Heather, White and
 a background color of your choice

-  VC - Black
-  VC - Charcoal Grey
-  VC - Honey
-  VC - Silver Grey
-  VC - Silver Heather
-  VC - White

*Suggested background color: Vanna's Choice in Sapphire



Start in the lower right-hand corner!

Square #12: Hedwig

Yarn Colors:

B=Black

CG=Charcoal Grey

H=Honey

SG=Silver Grey

SH=Silver Heather

W=White

B=Background Color

Row 1: 1B (1 block)

Row 2: 2B (2 blocks)

Row 3: 3B (3 blocks)

Row 4: 4B (4 blocks)

Row 5: 5B (5 blocks)

Row 6: 6B (6 blocks)

Row 7: 7B (7 blocks)

Row 8: 8B (8 blocks)

Row 9: 9B (9 blocks)

Row 10: 10B (10 blocks)

Row 11: 1B, 2CG, 8B (11 blocks)

Row 12: 7B, 2CG, 1SG, 1CG, 1B (12 blocks)

Row 13: 1B, 1CG, 3SG, 2CG, 6B (13 blocks)

Row 14: 5B, 2CG, 2SG, 3SH, 1CG, 1B (14 blocks)

Row 15: 1B, 1CG, 1SH, 1SG, 3SH, 2SG, 1CG, 5B (15 blocks)

Row 16: 4B, 2CG, 1SG, 2W, 1SH, 1BL, 3SH, 1CG, 1B (16 blocks)

Row 17: 1B, 1CG, 2SG, 1BL, 2SH, 1BL, 1W, 1BL, 2SG, 1CG, 4B (17 blocks)

Row 18: 4B, 1CG, 1SG, 6W, 3SH, 1SG, 2B (18 blocks)

Row 19: 2B, 1CG, 1SG, 2SH, 1BL, 2W, 1BL, 3W, 1SG, 5B (19 blocks)

Row 20: 5B, 1CG, 1SH, 1W, 1BL, 2W, 1BL, 2W, 1BL, 1SH, 1CG, 3B (20 blocks)

Row 21: 4B, 1SG, 2SH, 7W, 1CG, 6B (21 blocks)

Row 22: 6B, 1CG, 1SH, 5W, 1BL, 1W, 1SH, 1SG, 1CG, 4B (22 blocks)

Row 23: 5B, 1CG, 1SG, 1BL, 2W, 1BL, 1SH, 3W, 1SH, 7B (23 blocks)

Row 24: 7B, 1CG, 4W, 1SH, 4W, 1SG, 6B (24 blocks)

Row 25: 6B, 1CG, 1SG, 1W, 1BL, 1W, 1SH, 4W, 1SH, 1CG, 7B (25 blocks)

[Begin Decreasing]

Row 26: 6B, 1CG, 1SH, 1W, 1SH, 7W, 1CG, 6B (24 blocks)

Row 27: 6B, 1SG, 1BL, 4W, 2SH, 1W, 1H, 1SH, 1CG, 5B (23 blocks)

Row 28: 5B, 1SH, 2BL, 1SH, 1BL, 3W, 1BL, 1W, 1SG, 1CG, 5B (22 blocks)

Row 29: 5B, 1CG, 1SG, 4W, 1SH, 1BL, 2W, 1SH, 1CG, 4B (21 blocks)

Row 30: 4B, 1SH, 2W, 3SH, 4W, 1CG, 5B (20 blocks)

Row 31: 5B, 1SG, 8W, 1SH, 1CG, 3B (19 blocks)

Row 32: 3B, 1CG, 1SH, 2W, 1BL, 2W, 2SH, 1SG, 1CG, 4B (18 blocks)

Row 33: 4B, 1CG, 1SG, 1CG, 2SH, 1H, 2W, 1SH, 1CG, 3B (17 blocks)

Row 34: 3B, 1CG, 1SH, 1W, 1BL, 1SH, 4CG, 4B (16 blocks)

Row 35: 7B, 1CG, 3SH, 1CG, 3B (15 blocks)

Row 36: 3B, 1CG, 2SH, 1CG, 7B (14 blocks)

Row 37: 7B, 3CG, 3B (13 blocks)

Row 38: 12B (12 blocks)

Row 39: 11B (11 blocks)

Row 40: 10B (10 blocks)

Row 41: 9B (9 blocks)

Row 42: 8B (8 blocks)

Row 43: 7B (7 blocks)

Row 44: 6B (6 blocks)

Row 45: 5B (5 blocks)

Row 46: 4B (4 blocks)

Row 47: 3B (3 blocks)

Row 48: 2B (2 blocks)

Row 49: 1B (1 block)