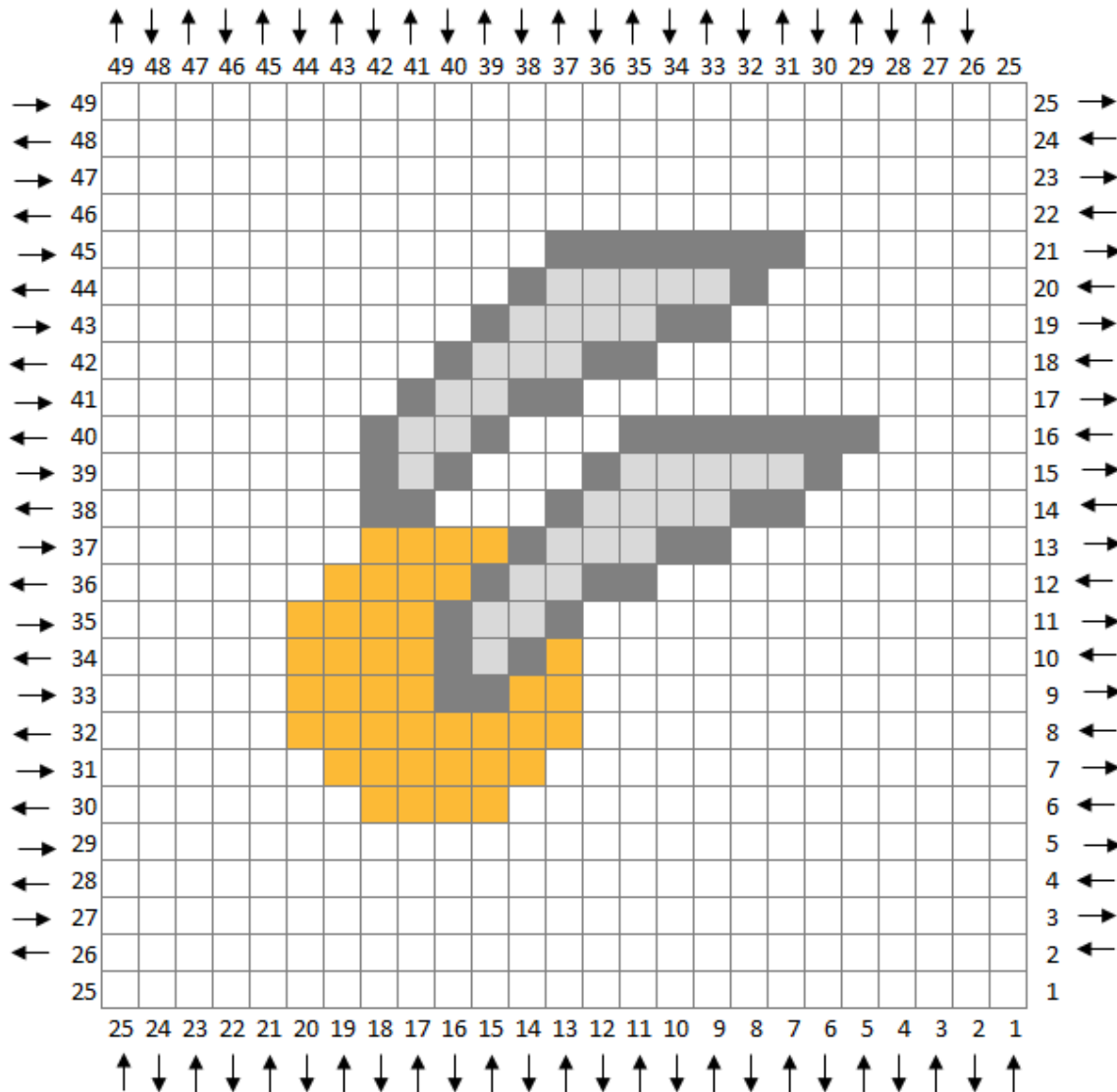


Harry Potter CAL - Square #3: The Golden Snitch



Harry Potter CAL

Square #3: The Golden Snitch

Recommended Materials:
Size I/5.5mm crochet hook

Suggested Yarn is Vanna's Choice in:
Mustard, Silver Grey, Silver Heather and
a background color of your choice



*Suggested background color: Vanna's Choice in Scarlet

Increasing (Rows 1-25)

First block of the row: Ch 4. Work 1 hdc in the 3rd chain space from the hook and in the next chain space.

Remaining blocks of the row: Join to the next block with a slip stitch in the "gap". Ch 2. Work 2 hdc in the "gap".

Decreasing (Rows 26-49)

First block of the row: Work 2 slip stitches up the edge of the work to get to the top row. Ch 2. Work 2 hdc in the "gap".

Remaining blocks of the row: Join to the next block with a slip stitch in the "gap". Ch 2. Work 2 hdc in the "gap".

Yarn Colors:M=Mustard
SH = Silver HeatherSG=Silver Grey
B=Background Color

Square #3: The Golden Snitch

Row 1: 1B (1 block)

Row 2: 2B (2 blocks)

Row 3: 3B (3 blocks)

Row 4: 4B (4 blocks)

Row 5: 5B (5 blocks)

Row 6: 6B (6 blocks)

Row 7: 7B (7 blocks)

Row 8: 8B (8 blocks)

Row 9: 9B (9 blocks)

Row 10: 10 (10 blocks)

Row 11: 11B (11 blocks)

Row 12: 12B (12 blocks)

Row 13: 13B (13 blocks)

Row 14: 14B (14 blocks)

Row 15: 15B (15 blocks)

Row 16: 16B (16 blocks)

Row 17: 17B (17 blocks)

Row 18: 18B (18 blocks)

Row 19: 19B (19 blocks)

Row 20: 4B, 3SG, 5B, 3M, 5B (20 blocks)

Row 21: 5B, 4M, 3B, 2SG, 1SH, 1SG, 5B (21 blocks)

Row 22: 6B, 1SG, 2SH, 2SG, 1B, 5M, 5B (22 blocks)

Row 23: 5B, 3M, 4SG, 3SH, 1SG, 7B (23 blocks)

Row 24: 8B, 1SG, 6SH, 1SG, 2M, 6B (24 blocks)

Row 25: 6B, 3M, 1SG, 5SH, 1SG, 9B (25 blocks)

[Begin Decreasing]

Row 26: 9B, 6SG, 3M, 6B (24 blocks)

Row 27: 5B, 6M, 5B, 3SG, 4B (23 blocks)

Row 28: 4B, 1SG, 1SH, 2SG, 4B, 5M, 5B (22 blocks)

Row 29: 5B, 4M, 3B, 2SG, 2SH, 1SG, 4B (21 blocks)

Row 30: 4B, 1SG, 3SH, 4SG, 3M, 5B (20 blocks)

Row 31: 7B, 1SG, 6SH, 1SG, 4B (19 blocks)

Row 32: 4B, 1SG, 5SH, 1SG, 7B (18 blocks)

Row 33: 7B, 6SG, 4B (17 blocks)

Row 34: 16B (16 blocks)

Row 35: 15B (15 blocks)

Row 36: 14B (14 blocks)

Row 37: 13B (13 blocks)

Row 38: 12B (12 blocks)

Row 39: 11B (11 blocks)

Row 40: 10B (10 blocks)

Row 41: 9B (9 blocks)

Row 42: 8B (8 blocks)

Row 43: 7B (7 blocks)

Row 44: 6B (6 blocks)

Row 45: 5B (5 blocks)

Row 46: 4B (4 blocks)

Row 47: 3B (3 blocks)

Row 48: 2B (2 blocks)

Row 49: 1B (1 block)