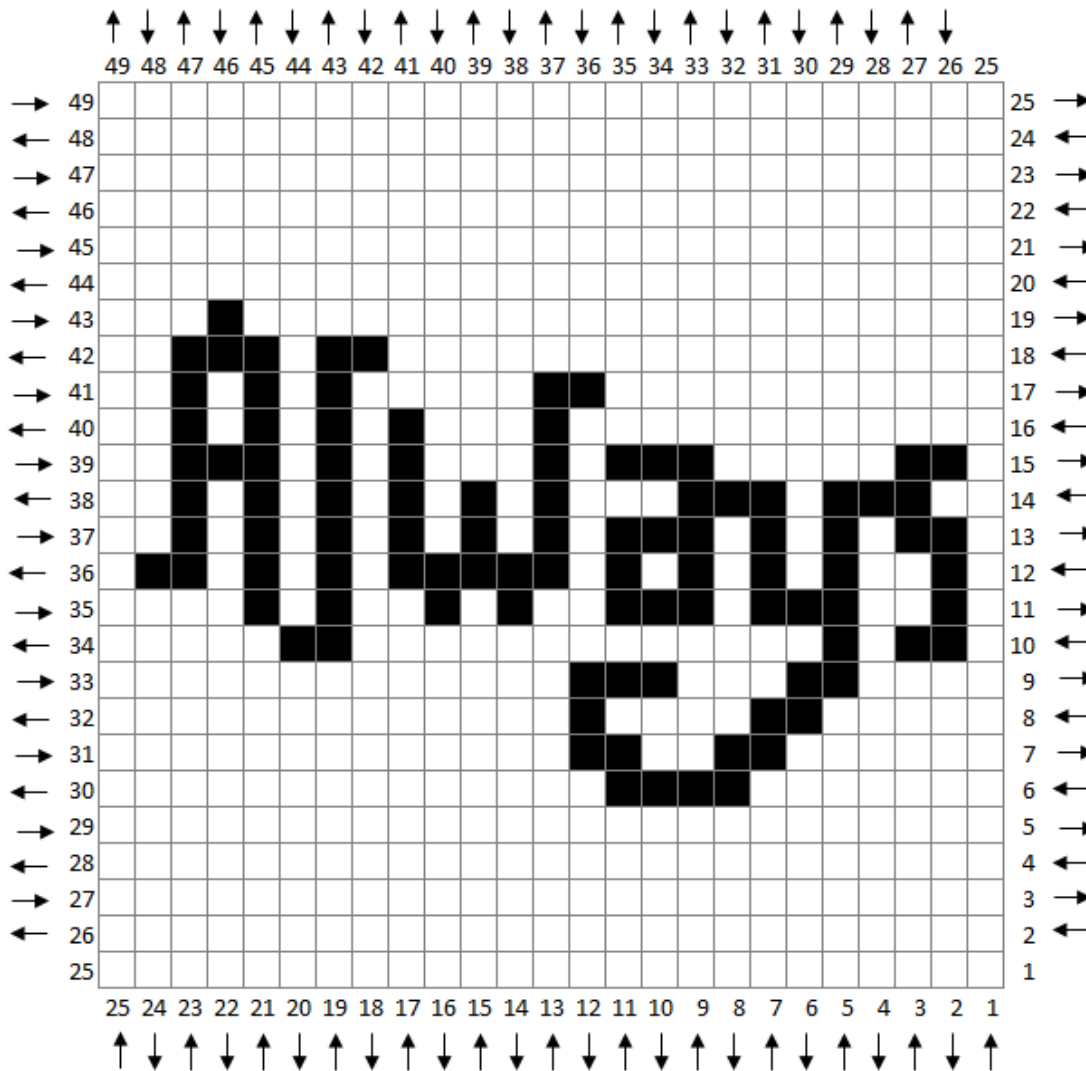


Harry Potter CAL – Alternate Square: Always



Harry Potter CAL

Alternate Square: "Always"

Recommended Materials:

Size I/5.5mm crochet hook

Suggested Yarn is Vanna's Choice in:

Black and a background color of your choice

■ VC - Black

Increasing (Rows 1-25)

First block of the row: Ch 4. Work 1 hdc in the 3rd chain space from the hook and in the next chain space.

Remaining blocks of the row: Join to the next block with a slip stitch in the "gap". Ch 2. Work 2 hdc in the "gap".

Decreasing (Rows 26-49)

First block of the row: Work 2 slip stitches up the edge of the work to get to the top row. Ch 2. Work 2 hdc in the "gap".

Remaining blocks of the row: Join to the next block with a slip stitch in the "gap". Ch 2. Work 2 hdc in the "gap".

Alternate Square: Always

Yarn Colors:
BL=Black B=Background Color

Row 1: 1B (1 block)
Row 2: 2B (2 blocks)
Row 3: 3B (3 blocks)
Row 4: 4B (4 blocks)
Row 5: 5B (5 blocks)
Row 6: 6B (6 blocks)
Row 7: 7B (7 blocks)
Row 8: 8B (8 blocks)
Row 9: 9B (9 blocks)
Row 10: 10B (10 blocks)
Row 11: 9B, 1BL, 1B (11 blocks)
Row 12: 1B, 2BL, 9B (12 blocks)
Row 13: 5B, 4BL, 2B, 1BL, 1B (13 blocks)
Row 14: 1B, 1BL, 2B, 5BL, 5B (14 blocks)
Row 15: 5B, 1BL, 4B, 1BL, 1B, 1BL, 2B (15 blocks)
Row 16: 1B, 2BL, 1B, 2BL, 4B, 1BL, 5B (16 blocks)
Row 17: 6B, 1BL, 3B, 1BL, 1B, 3BL, 2B (17 blocks)
Row 18: 4B, 1BL, 1B, 1BL, 2B, 1BL, 1B, 1BL, 6B (18 blocks)
Row 19: 7B, 2BL, 1B, 1BL, 1B, 1BL, 6B (19 blocks)
Row 20: 6B, 1BL, 1B, 2BL, 1B, 1BL, 8B (20 blocks)
Row 21: 10B, 1BL, 1B, 2BL, 7B (21 blocks)
Row 22: 8B, 3BL, 11B (22 blocks)
Row 23: 12B, 1BL, 1B, 1BL, 8B (23 blocks)
Row 24: 9B, 1BL, 2B, 2BL, 10B (24 blocks)
Row 25: 11B, 2BL, 1B, 1BL, 10B (25 blocks)

[Begin Decreasing]
Row 26: 11B, 1BL, 1B, 2BL, 9B (24 blocks)
Row 27: 9B, 2BL, 1B, 1BL, 10B (23 blocks)
Row 28: 8B, 2BL, 1B, 1BL, 1B, 1BL, 1B, 1BL, 6B (22 blocks)
Row 29: 5B, 2BL, 1B, 1BL, 3B, 1BL, 8B (21 blocks)
Row 30: 11B, 1BL, 1B, 1BL, 6B (20 blocks)
Row 31: 4B, 1BL, 1B, 1BL, 1B, 1BL, 10B (19 blocks)
Row 32: 9B, 1BL, 1B, 1BL, 1B, 1BL, 4B (18 blocks)
Row 33: 4B, 1BL, 1B, 1BL, 10B (17 blocks)
Row 34: 9B, 1BL, 1B, 1BL, 1B, 1BL, 2BL (16 blocks)
Row 35: 1B, 2BL, 1B, 1BL, 1B, 2BL, 7B (15 blocks)
Row 36: 7B, 1BL, 1B, 3BL, 2B (14 blocks)
Row 37: 2B, 1BL, 1B, 1BL, 8B (13 blocks)
Row 38: 7B, 1BL, 1B, 1BL, 2B (12 blocks)
Row 39: 2B, 2BL, 7B (11 blocks)
Row 40: 6B, 2BL, 2B (10 blocks)
Row 41: 9B (9 blocks)
Row 42: 8B (8 blocks)
Row 43: 7B (7 blocks)
Row 44: 6B (6 blocks)
Row 45: 5B (5 blocks)
Row 46: 4B (4 blocks)
Row 47: 3B (3 blocks)
Row 48: 2B (2 blocks)
Row 49: 1B (1 block)